



# HALOCOUTURE®

PRODUCT CATALOG

HALO  
*couture*

In 2010, our late founder, Tina A. Owens, set out on a mission to revolutionize the hair extension industry with her vision for The Original HALO®. This cult favorite quickly took over and became known for its innovative design and first-of-its-kind technology.

Since then, our experts have continued to redefine what it means to take it to the next level and provide premium products that enhance the everyday and boost confidence. Whether for a special occasion or to enhance the everyday, HALO products are designed with comfort and style in mind. Our collections include The Original and Layered HALO, Blend-Ins Clip Extensions, The Original and Hybrid Fall, The Bang, and The Pony. Our color collection includes a wide range of natural colors and gorgeous blends so you can provide the perfect match for your clients. HALOCOUTURE Extensions are made with 100% Remy Human Hair coated with a protective keratin seal for soft, silky, and luxurious results.

We are driven to share high-quality, innovative hair extensions and professional tools that deliver top-of-the-line results and build lifetime trust with your clients. The heart of our business has always been with the salon professional, and we're committed to helping you build a thriving extension business every step of the way.

Let's create hair happiness together!  
The HALO Family



## TABLE OF CONTENTS

# Enhance your business with our iconic line of HALO products.

THE ORIGINAL HALO®	04
THE LAYERED HALO®	06
NEW! BLEND-INS CLIP EXTENSIONS	08
THE ORIGINAL FALL®	10
THE HYBRID FALL®	12
THE BANG	14
THE PONY	16
SEMI-PERMANENT Tape-In & Weft	18
EXTENSION HAIR CARE	20
PREMIUM SALON TOOLS	22
COLORS & SWATCHES	24

# 01

## THE ORIGINAL HALO®



THE ORIGINAL HALO 24"  
Color #116

BEFORE



LENGTHS: 12" | 16" | 20" | 24"  
COLORS: 23 ORIGINAL | 7 BALAYAGE

HALOCOUTURE revolutionized the world of hair extensions with The Original HALO. Designed with comfort in mind, The Original HALO is non-damaging, virtually undetectable, and ideal for adding natural and effortless length and volume without commitment. The Original HALO is equipped with a thin, clear, Miracle Wire that is virtually undetectable once any trapped hair is combed and blended.

Low-maintenance and easy to install, The Original HALO is also great for clients who are new to hair extensions. Whether your client wants to add length, volume, or enhance color, The Original HALO is perfect for everyone.

### FEATURES

- Virtually undetectable Miracle Wire
- Comfortable and damage-free design
- Available in 4 lengths and 30 colors
- Volume equal to a full head of hair

### BENEFITS

- Beginner-friendly extension option
- Installed in minutes and can be pre-styled
- Enhances volume and length, perfect for everyday wear
- Use alone or with other HALOCOUTURE extensions





# 02

## THE LAYERED HALO®



THE LAYERED HALO 14"  
Color #B4/27



LENGTHS: 14" | 18" | 22"

COLORS: 23 ORIGINAL | 7 BALAYAGE

The Layered HALO has quickly become our most popular extension. Uniquely designed and unlike any other product available, it has 2-3 built-in, gradual layers, providing a seamless blend with natural hair. With 30% more grams than The Original HALO, The Layered HALO delivers effortless length and maximum volume.

The beautiful, flowing layers allow shorter styles to be transformed and are great for clients with dense or thick hair. The Layered HALO is perfect for new extension wearers and for clients who love The Original HALO but are looking for an occasional boost of volume.

### FEATURES

- Equipped with 2-3 built-in, gradual layers
- Comfortable and damage-free design
- Available in 3 lengths and 30 colors
- 30% more grams of hair than The Original HALO

### BENEFITS

- Installed in minutes and can be pre-styled
- Adds maximum volume for more dramatic results
- Pre-blended layers that blend seamlessly with natural hair
- Use alone or with other HALOCOUTURE extensions





# 03

## BLEND-INS CLIP EXTENSIONS



BLEND-INS CUT 16"  
Color #1B & 2  
Widths 1", 4" & 5"



LENGTHS: 16" | 20"

COLORS: 23 ORIGINAL

SIZES: SMALL - 1" WIDE (4-PACK) | MEDIUM - 2" WIDE (2-PACK) | LARGE - 5" WIDE (2-PACK)

Seamless like you've never seen before. Our HALOCOUTURE Blend-Ins are designed using first-of-its-kind clip-in technology featuring injected hair at the seam to create the most discreet and undetectable result. Customize to any client and create a full transformation in seconds! Blend-Ins are secured using our damage-free silicone-coated clips that attach comfortably to the natural hair.

Unlike other clip-ins on the market, Blend-Ins come in smaller packs by width, giving both stylists and clients the flexibility to create a completely customized look. Blend-Ins can be used on their own or layered with other HALOCOUTURE extensions to add maximum volume, extend length, enhance color, and add dimension.

### FEATURES

- First-of-its-kind injected hair at the seam
- Comfortable and damage-free design
- Available in 2 lengths and 23 original colors
- Multiple widths for maximum customization

### BENEFITS

- Use alone or with other HALOCOUTURE extensions
- Targets problem areas and conceals hair loss/thinning
- Installed faster than other extension methods
- Can be used alone or as an add-on service



# 04

## THE ORIGINAL FALL®



THE ORIGINAL FALL 18"  
Color #B622



**LENGTH:** 16" - 18"

**COLORS:** 23 ORIGINAL & ROOTED OPTIONS | 7 BALAYAGE

The Original Fall is an innovative hair topper that provides maximum coverage and volume to conceal hair loss, thinning, and new growth between color services while adding length and fullness instantly. Designed with a breathable lace base using hand-tied weft technology, the Original Fall blends seamlessly with natural hair and can be placed right up to the hairline or 1"-2" behind the hairline to provide coverage and volume near the crown.

The Original Fall is secured by four comfortable, silicone-coated clips that attach to the natural hair, is gentle on fine or thinning hair, and is perfect for layering with other extensions to achieve maximum volume and coverage.

### FEATURES

- Lightweight, breathable base for comfortable daily wear
- Hand-tied weft technology for ultimate versatility
- Attached and secured by 4 comfortable silicone-coated clips
- Available in 30 colors with original, balayage, and rooted options

### BENEFITS

- Provides maximum coverage for hair loss and thinning
- Can be placed right up to the hairline or 1"-2" behind
- Comes 16-18" long so it can be customized to each client
- Use alone or with other HALOCOUTURE extensions





# 05

## THE HYBRID FALL®



THE HYBRID FALL 16"  
Color #613

**LENGTH:** 14" - 16"

**COLORS:** 23 ORIGINAL & ROOTED OPTIONS | 7 BALAYAGE

Loved for its versatility and transformative results, The Hybrid Fall is a lightweight hair topper that provides natural but subtle coverage and volume to conceal hair loss, thinning, and new growth between color services while adding length and fullness instantly. The Hybrid Fall is created with a combination of hand-tied and machine-sewn technology and paired with a fabric base to deliver a seamless and natural blend.

Secured by four comfortable, silicone-coated clips that attach to the natural hair, The Hybrid Fall is gentle on fine or thinning hair, and is perfect for layering with other extensions to achieve maximum volume and targeted coverage.

### FEATURES

- Lightweight, breathable base for comfortable daily wear
- Hybrid of hand-tied and machine-sewn weft technology
- Breathable, comfortable base using hybrid weft technology
- Available in 30 colors with original, balayage, and rooted options

### BENEFITS

- Adds subtle volume and conceals hair loss and thinning
- Conceals gray hair or new growth between color services
- Comes 14"-16" long so it can be customized to each client
- Use alone or with other HALOCOUTURE extensions





# 06

## THE BANG



THE BANG  
Color #1B



LENGTH: 13" - 14"

COLORS: 23 ORIGINAL & ROOTED OPTIONS

The Bang is a lightweight and versatile extension piece that instantly transforms. Placed at the hairline, it is secured by 2 comfortable, silicone-coated clips that attach to the natural hair. The Bang addresses various goals and concerns, such as filling in sides and concealing thin or broken hair around the hairline. Your clients will love that they can effortlessly transform their look without the commitment.

Unlike other clip-in bangs on the market, The Bang comes 13"-14" in length and is completely customizable, giving you the ability to cut and style to compliment your clients' natural hair. The Bang can be used alone or paired with other HALOCOUTURE extensions for an even more elevated look.

### FEATURES

- Breathable base for comfortable daily wear
- Secured by two silicone-coated, non-damaging clips
- Available in 23 original colors with rooted options
- 13"-14" length allows it to be custom cut to any desired style

### BENEFITS

- Instantly enhances the client's natural features
- Conceals hair loss/thinning around the hairline
- Can be customized to meet the specific needs of your client
- Use alone or with other HALOCOUTURE extensions



# 07

## THE PONY



LENGTHS: 16" - 18"  
COLORS: 23 ORIGINAL

Attached comfortably and securely with a small built-in comb, The Pony is a versatile extension designed to add commitment-free volume and length to your updo. It is equipped with a section of hair that wraps around to conceal the hair tie, allowing for an instant transformation with a seamless blend.

Simple yet sophisticated, The Pony can be used to transform a casual bun or even to create elaborate up-styles that require extra length and volume.

### FEATURES

- Available in 23 original colors
- Quick and easy installation for instant results
- Attaches comfortably and securely with small built-in comb
- Discreet attachment that can be easily hidden with natural hair

### BENEFITS

- Adds commitment-free volume and length to ponytails
- Enhances a casual bun or create elaborate up-styles
- Can be customized to meet the specific needs of your client
- Use alone or with other HALOCOUTURE extensions

THE PONY  
Color #1B

BEFORE





# 08

## SEMI-PERMANENT EXTENSIONS



### Tape-In

LENGTHS: 12" | 16" | 22"

COLORS: 23 ORIGINAL | 7 BALAYAGE | 9 ROOTED

Tape-In extensions are comfortably secured with a non-slip, medical-grade adhesive that keeps hair locked in place until ready to be removed. Each application lasts 6-8 weeks.

HALOCOUTURE Tape-In extensions are great for any hair type and come in a variety of lengths and colors so you can create the perfect transformation for your clients.



#### FEATURES

- Comfortably secured by a non-slip, medical-grade adhesive
- Lightweight and versatile for maximum customization
- Available in 12" for adding length and volume to shorter styles

#### BENEFITS

- Adds semi-permanent length and volume
- Can be used to create highlights and lowlights
- Targets problem areas and conceals hair loss/thinning
- Hair can be reapplied up to 3 times with proper care

### Weft Extensions

LENGTHS: 16" | 20"

COLORS: 23 ORIGINAL | 7 BALAYAGE | 9 ROOTED

Our Weft Extensions are comfortably secured by non-slip, silicone-lined beads, that are sewn into the base. Once sewn in, the result is a seamless and virtually undetectable look with natural movement.

#### Hand-Tied Wefts

Made by tying individual strands of hair together by hand to create a secure, strong, yet thin base. Hand-tied wefts are ideal for fine to medium hair.

#### Machine-Tied Wefts

Made by tying and stitching hair into a fine mesh, complete with polyurethane bonds to prevent shedding. Machine-tied wefts are lightweight and easily customizable, making them ideal for medium to thick hair.



#### FEATURES

- Quick and heatless application
- Wide weft creates natural movement
- Hand and machine-tied options for maximum customization
- Available in 2 lengths and 39 colors with balayage and rooted options

#### BENEFITS

- Adds semi-permanent length and volume
- Can be used to correct haircuts or add dimension
- Hair can be reapplied up to 3 times with proper care
- Targets problem areas and conceals hair loss/thinning





# 09

## EXTENSION HAIR CARE



Created and formulated to protect the keratin seal on our 100% remy human hair extensions, our hair care line is packed with essential ingredients that help maintain, preserve, and extend the life of your HALOCOUTURE extensions. It is the only product line we recommend to care for them safely.

SULFATE FREE • PARABEN FREE • SODIUM CHLORIDE FREE  
CERTIFIED ORGANIC • NO ANIMAL TESTING.



### Revive Shampoo

12FL OZ

Revive Shampoo gently cleanses product build-up without damaging the Keratin Seal. This moisture-packed shampoo protects and preserves color, restoring hair's youthful condition.



### Replenish Conditioner

12FL OZ

This deep penetrating conditioner replenishes moisture while strengthening the hair shaft and sealing the cuticle to lock in shine. Shea Butter, Plant Proteins, Peptides, and Organic Extracts leave hair feeling silky smooth.



### Silk Spritz Hair Oil

12FL OZ

Silk Spritz Hair Oil is a weightless leave-in hair oil that provides much-needed moisture while smoothing frizz and adding shine to both your natural hair and your extensions.



### Hair Care Travel Kit

Formulated specifically for extension care, this set contains all of the travel essentials to keep your extensions looking and feeling brand new.

#### SET INCLUDES

- Revive Shampoo (3.2 oz)
- Replenish Conditioner (3.2 oz)
- Intense Therapy Mask (3.2 oz)
- Hair Serum (1 oz)



# 10 PREMIUM SALON TOOLS

Our tools and accessories are designed to make styling and caring for your HALO products simple.



#### BROWSE OUR COLLECTION OF PROFESSIONAL ESSENTIALS & SALON PACKAGES

Access business-building starter kits and premium salon merchandising designed to take your craft, and your career, to the next level.



## Professional Color Ring (pictured above)

Create precise color matches for every client using our Professional Color Ring. Complete with 12-inch swatches and 49 shades from each method of extension we offer. This tool ensures that you get the most accurate representation of each color and eliminates the cost of making exchanges.



## Auto-Rotating Ceramic Curling Iron

Styling your hair has never been easier! The user-friendly auto-rotating function allows you to create beautiful curls at the touch of a button. The short clamp design gives you the option to curl as a wand and create gorgeous beachy waves.

#### FEATURES & BENEFITS

- 1" Ceramic Tourmaline Barrel
- Auto-Rotate Left, Right, and Center
- Temperature Ranges from 260°F to 410°F
- 1 Hour Auto-Shut Off



## Pure Ceramic Flat Iron

Our flat iron is infused with tourmaline to help smooth down hair cuticles and lock in moisture, leaving hair humidity-resistant and free of static and frizz.

#### FEATURES & BENEFITS

- Rounded Plates for Straightening and Curling Options
- Color-Coded Indicator Light for Precise Heat Settings
- Temperature Ranges from 270°F to 450°F
- Hand Touch Technology Provides Rapid Heat Recovery
- 1 Hour Auto-Shut Off



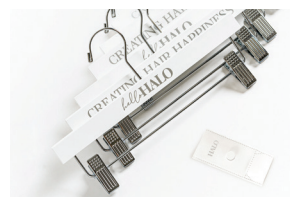
## Hair Clips

Our non-slip Hair Clips are key to keeping appointments running smoothly! Comfortably pull back hair during cuts, colors, and blowouts without snagging. Our secure and damage-free design ensures that hair will stay in place during styling, no matter the texture or thickness.



## Salon Cape

Our signature HALO Salon Cape offers a stylish and comfortable way to protect clients during cuts, washes, coloring, and more. Complete their salon experience with our reusable and adjustable Salon Cape.



## Halo Hanger & Attachment

Safely and neatly store your hair extensions with the HALO Hanger. Using the hanger helps to protect your extensions from getting tangled or damaged. It is also useful when drying your extensions after washing them.

Use the Hanger Attachment to safely store the Fall, Ponytail, and Bang with your HALO.



# 11

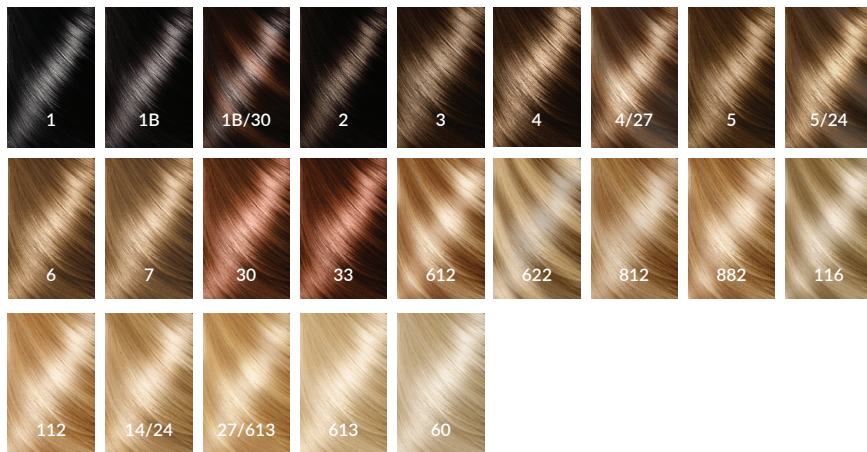
## COLORS & LENGTHS



Our wide range of colors and blends gives you the ability to provide the perfect color match for your clients. HALOCOUTURE Extensions are made with the finest quality, keratin-sealed, 100% Remy human hair that can be colored, washed, and styled with hot tools.

### Original Colors

Available in The Original & Layered HALO, Blend-Ins, The Original & Hybrid Fall, The Bang, The Pony, Hand & Machine-Tied Wefts, and Tape-In Extensions with rooted and non-rooted options.



### Balayage Colors

Available in The Original & Layered HALO, The Original & Hybrid Fall, and Professional Weft & Tape-In Extensions.



### Rooted

Available in Professional Weft & Tape-In Extensions only.







# Creating Hair Happiness.

#HALOCOUTURE

T: 800-220-0906  
36625 Kevin Road, Suite 140, Wildomar, CA 92595  
@halocoutureextensions  
[halocouture.com](http://halocouture.com)